

The ideal system

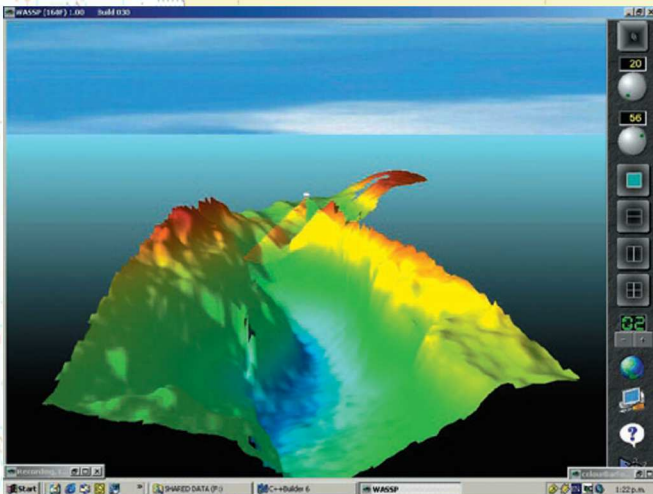


**WASSP multibeam sonar
112 beams - wide swath**

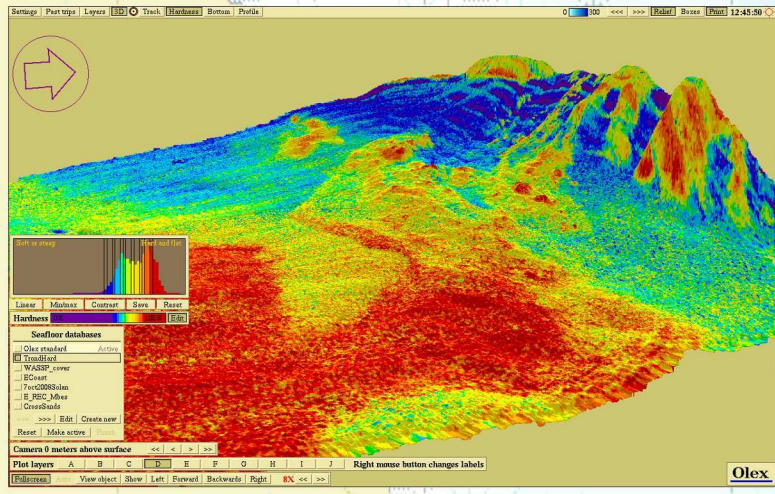
The perfect platform



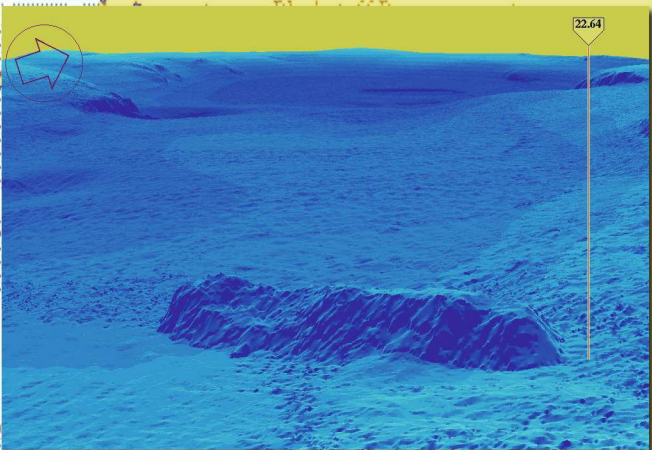
**New 7.2 m road-trailerable
MCA certified Cheetah**



**Instant 3D bathymetry map
display in high resolution**



**Detect changes in seafloor
hardness and map fish schools**



Wreck in perspective view

**A winning combination - factory
fitted WASSP on your new
Cheetah Marine catamaran:**

- Multibeam Sonar Already Installed
- Fully Coded Workboat
- Realtime 3D Seafloor Profiler
- Map Features in the Water
- Economical Road Trailerable Vessel
- Side Scan Imagery

New 7.2 m Series



The most recent addition to the Cheetah range is the newly designed 7.2 m catamaran.

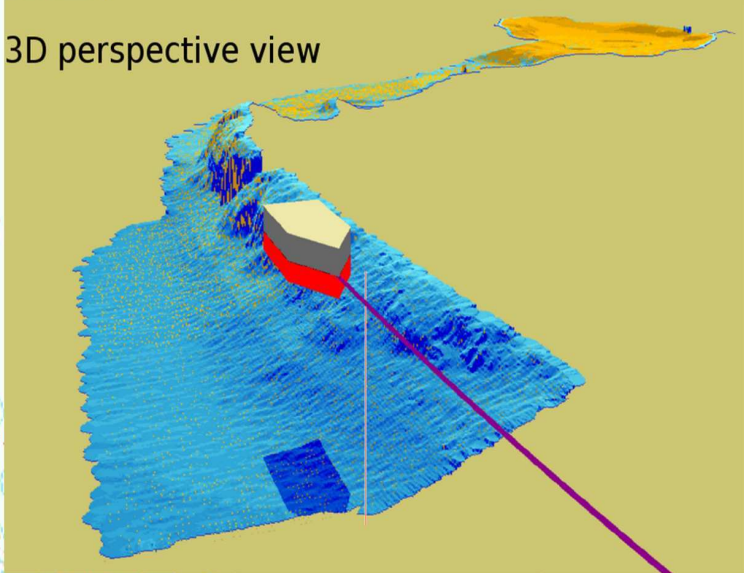
Continual research, including tank and flood tests, enables Cheetah Catamarans to remain at the forefront of working boat technology.

A new trailer design has also been developed to match the new vessel, creating a versatile survey platform than can readily be towed to wherever it is needed.

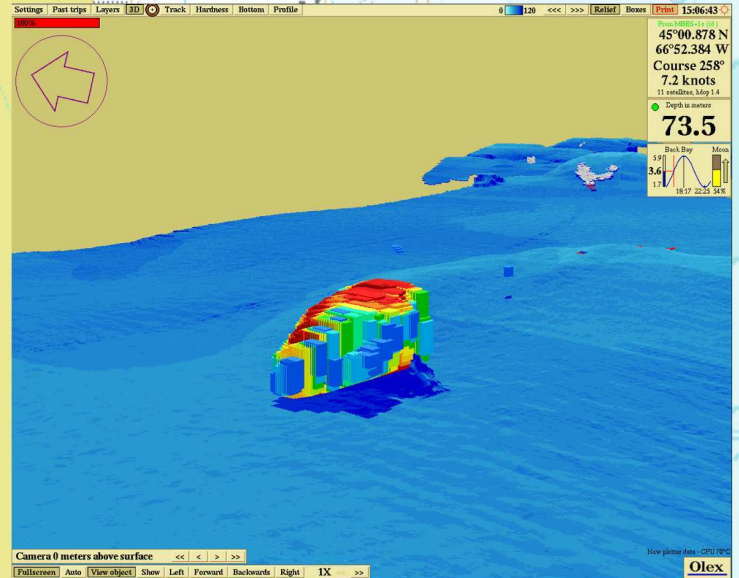
Dimensions of new 7.2 m series

Length (L.O.A.)	7.2 m
Beam	2.5 m
Deck Area	2.4 x 2.4 m
Wheelhouse	1.7 m long x 2.4 m wide

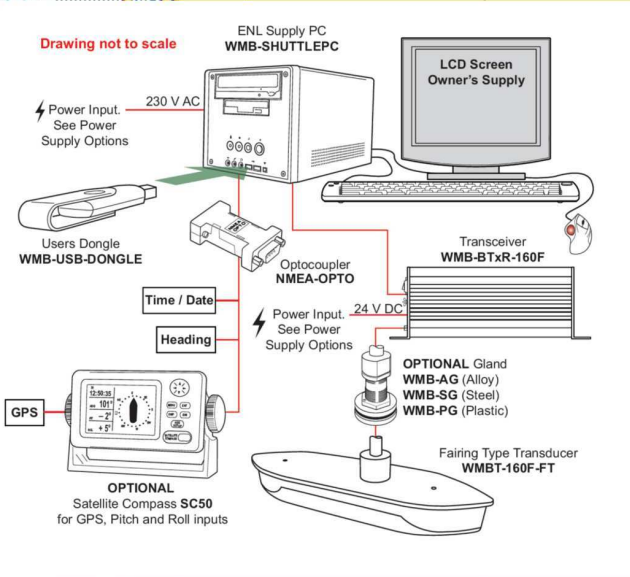
Real-time 3D display in Olex plotter



Fish-school mapped in 3D with WASSP



WASSP setup and extra sensors



Specifications of WASSP multibeam

	160kHz	80 kHz
Frequency	160kHz	80 kHz
Sonar Type	Multibeam 112 beams	Multibeam 112 beams
Power	40W to 1.2kW	150w to 1.5kw
Transducer Dimensions	330 mm (L) x 168 mm (W)	533 mm (L) x 340 mm (W)
Transducer Weight	15 kg with 10 m cable	39 kg with 20 m cable
Transmit Beam Swath Angle	120° x 4°	120° x 4°
Depth Range	2m – 200m	10m – 500m
Minimum Resolution	15cm	30cm